

Rivet hinges

WITH SPACE SCREWS

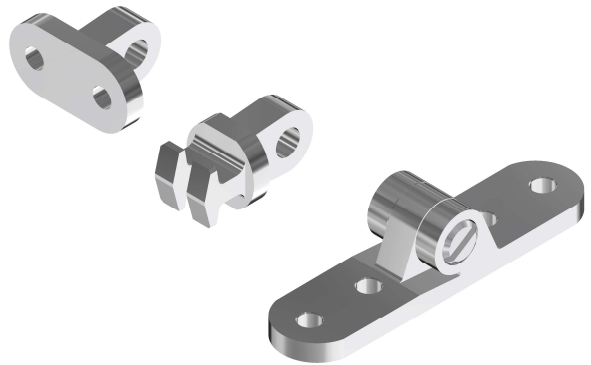


Regular hinges

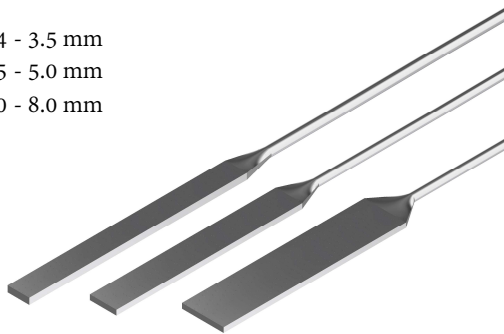
Rivet hinges

WITH SPACE SCREWS

- Perfect articulation with Space Screws
- Combinations with plastic front hinge possible
- Three wires sizes available
- Minus or plus/minus screw possible
- Matching rivets on demand
- Rivet holes can have threads on request

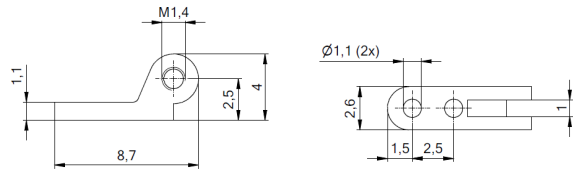
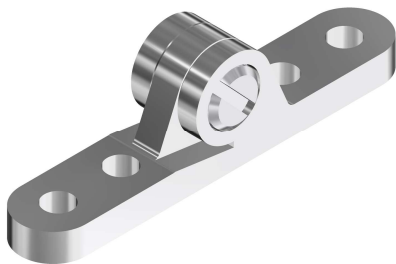


18-01034 - 3.5 mm
 18-01035 - 5.0 mm
 18-01040 - 8.0 mm



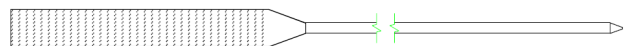
11-20246 - 3 mm
 11-20245 - 4.2 mm
 11-20251 - 5.4 mm
 11-20247 - 8 mm

51-05009 – 2.6 mm



51-05009	51-05007	33-04553
<p>0°/6° inclination</p>	<p>0°/6° inclination</p>	<p>0°/6° inclination</p>

Wire: 18-01034 - 3.5 mm / 18-01035 - 5.0 mm / 18-01040 - 8.0 mm



Screws: 99-05310.600

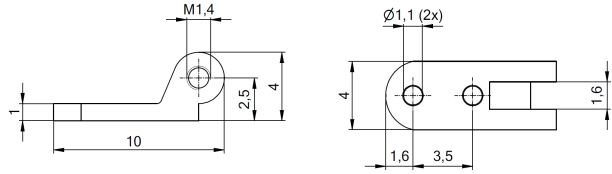
99-02310.600

Space Screws

Rivet hinges

WITH SPACE SCREWS

51-05010 – 4.0 mm

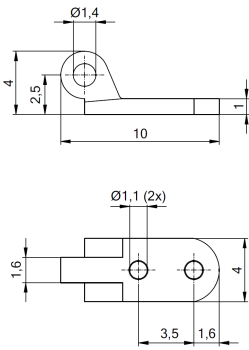


51-05010

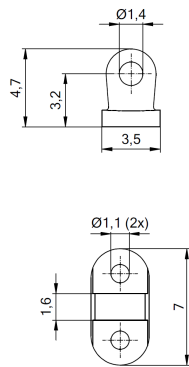
51-05008

33-04552

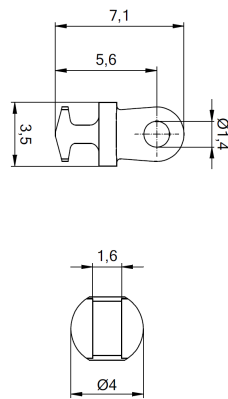
33-04560



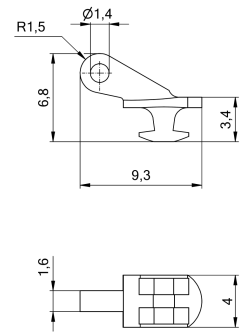
0°/6° inclination



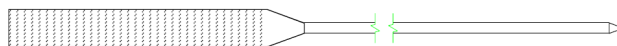
0°/6° inclination




0°/6° inclination



Wire: 18-01035 - 5.0 mm / 18-01040 - 8.0 mm



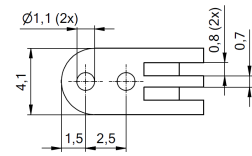
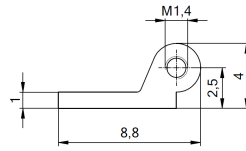
Screws: 99-05327.600 

99-02327.600  Space Screws

Rivet hinges

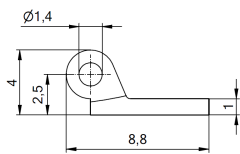
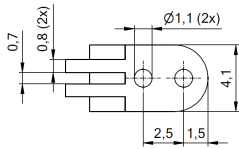
WITH SPACE SCREWS

51-05000 – 4.1 mm

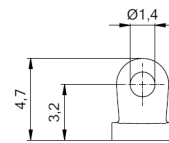
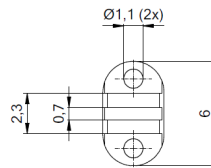


0°/6° inclination

51-05000

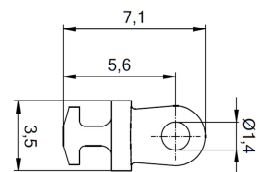
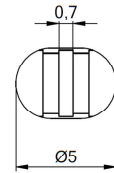


51-05024



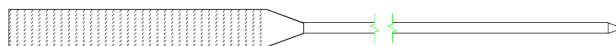
0°/6° inclination

33-04555



0°/6° inclination

Wire: 18-01035 - 5.0 mm / 18-01040 - 8.0 mm



Screws: 99-02379.600

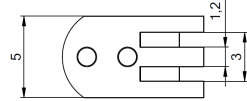
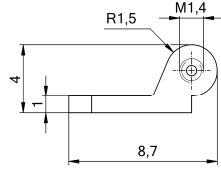
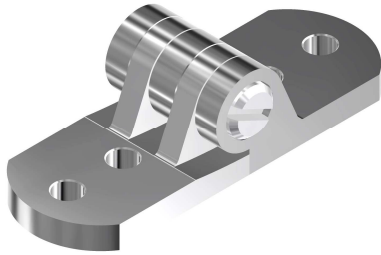


Space Screws

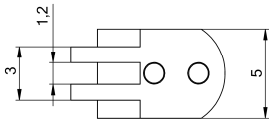
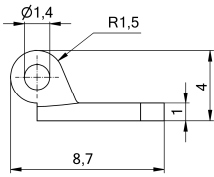
Rivet hinges

WITH SPACE SCREWS

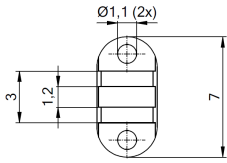
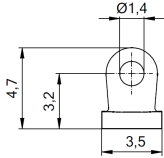
51-09030 – 5.0 mm



51-09030

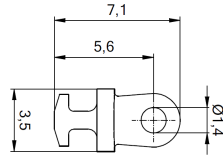
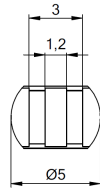


51-05019



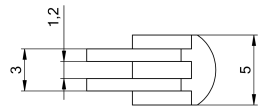
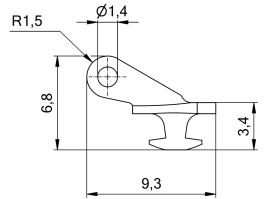
0°/6° inclination

33-04554

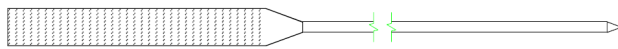



0°/6° inclination

33-04561



Wire: 18-01035 - 5.0 mm / 18-01040 - 8.0 mm



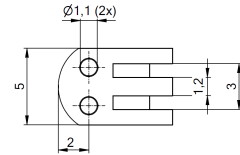
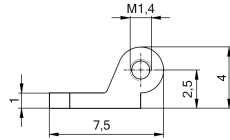
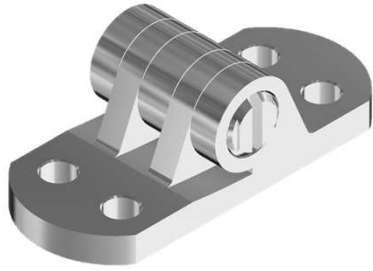
Screws: 99-05334.600 

99-02334.600  Space Screws

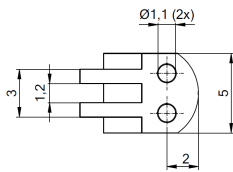
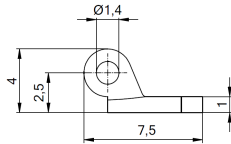
Rivet hinges

WITH SPACE SCREWS

51-05011 – 5.0 mm

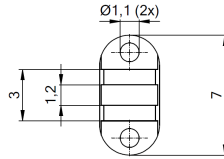
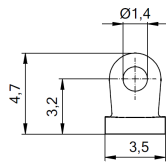


51-05011



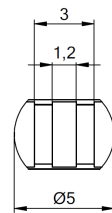
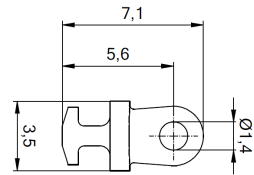
0°/6° inclination

50-05019



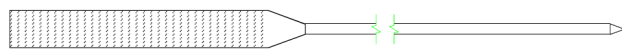
0°/6° inclination


33-04554



0°/6° inclination

Wire: 18-01035 - 5.0 mm / 18-01040 - 8.0 mm



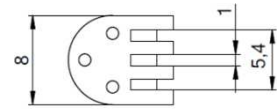
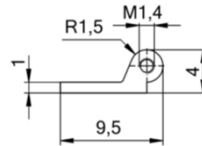
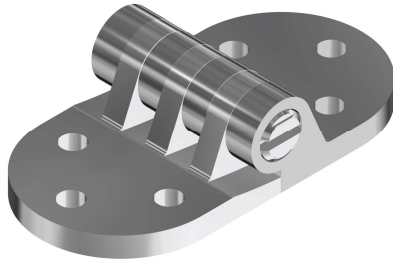
Screws: 99-05334.600 

99-02334.600  Space Screws

Rivet hinges

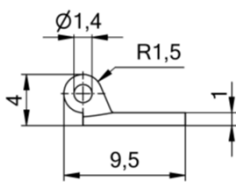
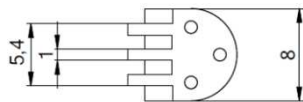
WITH SPACE SCREWS

51-05082 – 8.0 mm



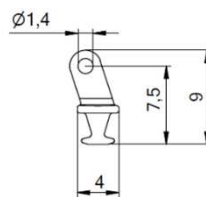
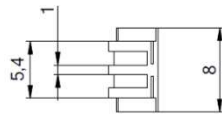
0°/6° inclination

51-05083

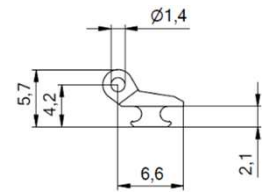
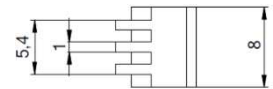


0°/6° inclination

33-04233

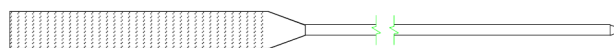



33-05147



0°/6° inclination

Wire: 18-01040 - 8.0 mm



Screws: 99-05380.600 

99-02380.600  Space Screws



OBE GmbH & Co. KG · Turnstr. 22 · 75228 Ispringen · Germany
Tel. +49 7231 802-0 · Fax +49 7231 802-156 · www.obe.de · info@obe.de